

Augmented reality learning cards

1 -----

Cut out the cards along the dotted line.

2 

Fold the card from the centre so that the image is on one side and the questions on the other.

You may glue the halves together if you'd like.

3 

Scan the code using a smart device.

BARN SWALLOW



1. DESCRIBE THE BARN SWALLOW.
2. WHAT DOES THE BARN SWALLOW USE TO BUILD ITS NEST?
3. WHAT DOES THE BARN SWALLOW EAT?

Find the answers by scanning the code or search the website www.tlu.ee/armang



Idea and execution: Tallinn University School of Educational Sciences, EDUSPACE, EXU and Mobilab

TALL HERMANN TOWER



1. WHERE IS THE TALL HERMANN TOWER LOCATED?
2. HOW OFTEN IS THE FLAG RAISED AND LOWERED ON THE TOWER?
3. WHAT ARE THE COLOURS OF THE ESTONIAN FLAG?

Find the answers by scanning the code or search the website www.tlu.ee/armang



Idea and execution: Tallinn University School of Educational Sciences, EDUSPACE, EXU and Mobilab

HERRING



1. DESCRIBE THE HERRING.
2. IN WHICH SEA DOES THE BALTIC HERRING LIVE?
3. WHAT DOES THE HERRING EAT?

Find the answers by scanning the code or search the website www.tlu.ee/armang



Idea and execution: Tallinn University School of Educational Sciences, EDUSPACE, EXU and Mobilab

CORNFLOWER



1. DESCRIBE THE CORNFLOWER.
2. WHAT ARE THE COMMON NAMES OF THE CORNFLOWER?
3. WHICH MEDICAL PROPERTIES DOES THE CORNFLOWER HAVE?

Find the answers by scanning the code or search the website www.tlu.ee/armang



Idea and execution: Tallinn University School of Educational Sciences, EDUSPACE, EXU and Mobilab

Augmented reality learning cards

1 -----

Cut out the cards along the dotted line.

2 

Fold the card from the centre so that the image is on one side and the questions on the other.

You may glue the halves together if you'd like.

3 

Scan the code using a smart device.

SWALLOWTAIL



1. HOW MANY LEGS DOES THE SWALLOWTAIL HAVE?
2. FOR HOW LONG HAS THE SWALLOWTAIL BEEN THE NATIONAL BUTTERFLY OF ESTONIA?
3. WHAT COLOUR ARE THE SPOTS ON THE SWALLOWTAIL'S WINGS?

Find the answers by scanning the code or search the website www.tlu.ee/armang



Idea and execution: Tallinn University School of Educational Sciences, EDUSPACE, EXU and Mobilab

MAP OF ESTONIA



1. WHAT IS THE CAPITAL OF ESTONIA?
2. HOW MANY COUNTRIES ARE IN ESTONIA?
3. WHICH OTHER COUNTRIES SHARE A BORDER WITH ESTONIA?

Find the answers by scanning the code or search the website www.tlu.ee/armang



Idea and execution: Tallinn University School of Educational Sciences, EDUSPACE, EXU and Mobilab

GNAT



1. HOW MANY WINGS DOES A GNAT HAVE?
2. WHAT PLACE IN THE WORLD HAS NO GNATS?
3. HOW CAN YOU PROTECT YOURSELF FROM GNATS?

Find the answers by scanning the code or search the website www.tlu.ee/armang



Idea and execution: Tallinn University School of Educational Sciences, EDUSPACE, EXU and Mobilab

TICK



1. WHERE DO TICKS LIVE?
2. WHAT DO TICKS FEED ON?
3. HOW CAN YOU AVOID TICK BITES?

Find the answers by scanning the code or search the website www.tlu.ee/armang



Idea and execution: Tallinn University School of Educational Sciences, EDUSPACE, EXU and Mobilab

Augmented reality learning cards



Cut out the cards along the dotted line.



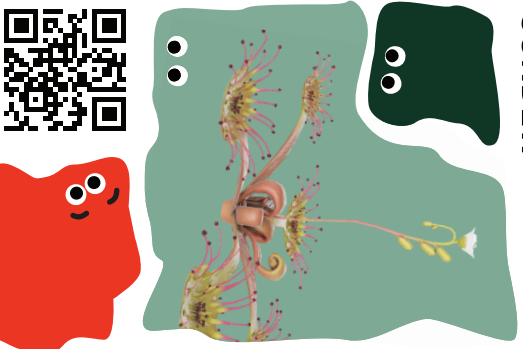
Fold the card from the centre so that the image is on one side and the questions on the other.

You may glue the halves together if you'd like.



Scan the code using a smart device.

SUNDEW



1. WHERE DOES THE NAME SUNDEW COME FROM?

2. WHAT MAKES SUNDEW LEAVES SPECIAL?

3. HOW LONG CAN A SUNDEW LIVE?

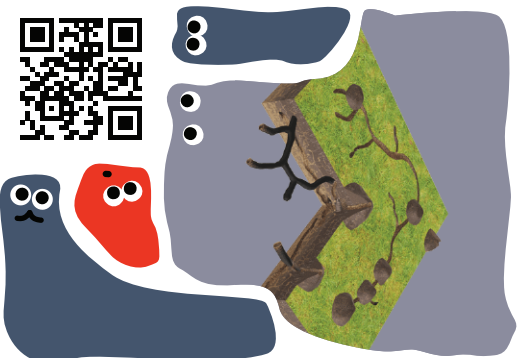
Find the answers by scanning the code or search the website www.tlu.ee/armang



Idea and execution: Tallinn University School of Educational Sciences, EDUSPACE, EXU and Mobilab



MOLE



1. WHAT DOES THE MOLE EAT?

2. WHAT HELPS THE MOLE LIVE UNDERGROUND?

3. WHY ARE MOLES USEFUL?

Find the answers by scanning the code or search the website www.tlu.ee/armang



Idea and execution: Tallinn University School of Educational Sciences, EDUSPACE, EXU and Mobilab

